

PRODUCT CATALOG



Tractor Linkage Parts



When your
livelihood
depends on
doing a
quality job ...

NEW PRODUCTS

CLEVISES

See page 5.



STROKE CONTROLS

See page 12.



BEAD-CHEATA

See page 12.



RED HEAD HITCH PINS

Large diameter hitch pins, see page 4.



LIFT ARM PINS

See page 8.



RACK DISPLAYS

New merchandisers, see page 14.



BULK PRODUCTS

See pages 4, 6, 7, 8 and 9.



PRODUCT SECTIONS

HITCH PINS4



CLEVISES5



TOP LINKS7



DRAWBARS6



STABILIZERS6



WELD-ON ENDS7



LIFT ARM PINS8



TOP LINK PINS8



LINCH PIN/BUSHINGS9



PTO ADAPTERS & ACCESSORIES10



HAIR PIN CLIPS9



ASSORTMENTS13



RACK DISPLAYS14



THE THREE POINT HITCH

TOP LINK CONNECTION

One end of the top link is fastened to the tractor at a bracket located behind the tractor's seat. The other end of the top link is connected to the top bracket of the implement 'A' frame. Both connections are secured with a top link pin (similar to a clevis pin).

Top link pins are always unthreaded and are held in place by either a linch pin, or in some cases, a large hairpin clip. (see figure 3) Top links and top link pins vary in length, but their respective ball socket holes and pin diameters are standardized by horsepower category. (see figure 2)



FIG. 3

LOWER LINK CONNECTIONS

One end of each lower link is secured to the tractor axle housing by a special OEM mounting pin. The other end of the lower link is connected to a lower hitch pin, fastened to the lower bracket of the implement's 'A' frame. Category 0, 1 and lighter category 2 implements use threaded lower hitch pins, which are bolted to the implement bracket. (see figure 4) Heavier category 2 and most category 3 implements use special clevis pins, which are mounted through two brackets on the implement, thereby supporting both ends of the pin, similar to the top link connection. (see figure 3)

Most lower hitch pins (other than clevis pin types) are threaded on the end that bolts to the implement bracket. The unthreaded end with the cross hole accommodates the ball socket of the lower link. The lower link is secured on the pin with a linch pin or large hair pin clip. (see fig. 4)

Lower links and lower hitch pins vary in length, but their respective ball socket holes and pin diameters are standardized by horsepower category. (see figure 2)



FIG. 4

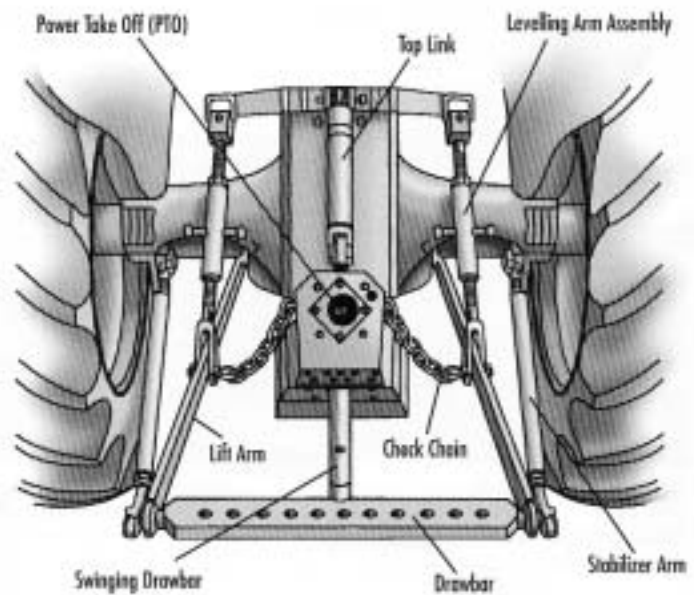
BACKGROUND

Most tractors today are equipped with a three point hitch for attaching implements to the tractor. It lets the operator raise implements when transporting them and provides height and tilt adjustments during use.

The three point hitch gets its name from the tractor's three hook up points: two lower links and one top link. (see figure 1) Special pins are used to fasten the implement at these three points. They are called top link pins at the top link connection and lower hitch pins at the lower link connections.

The diameters of the connection pins and corresponding ball sockets of the tractor's hitch points have been standardized by the American Society of Agricultural Engineers (ASAE) by horsepower category. (see figure 2)

FIG. 1



CATEGORY	MAXIMUM DRAWBAR HORSEPOWER	TOP LINK PIN DIAMETER	LOWER HITCH PIN DIAMETER	LOWER HITCH POINT SPAN
0	up to 20	5/8"	5/8"	20"
1	up to 45	3/4"	7/8"	26"
2	40 to 100	1"	1-1/8"	26" or 32"
3	80 to 225	1-1/4"	1-7/16"	38"

FIG. 2

HITCHING UP DIFFERENT CATEGORIES

Sometimes a tractor must be hitched to a different category implement. For example, a new category 2 tractor may be used to mow with an older category 1 rotary cutter. A category 1 top link pin should be used with a category 1 to 2 bushing to fit the tractor's category 2 top link ball socket. CASE offers special lower hitch pins with a different diameter on each end. In this case, the category 1 pin could be replaced with a special lower hitch pin, which has a 7/8" diameter threaded end to fit the category 1, 7/8" hole in the implement bracket and a category 2, 1-1/8" diameter unthreaded end to fit the tractor's category 2 lower link ball socket. CASE makes special pins and bushings in many varieties.

RED HEAD FORGED HITCH PINS

- Our BEST HITCH PIN
- Our BEST SELLING PIN
- Made of high tensile steel
- DOUBLE HEAT TREATED
- One piece forged pin
- Red plastic-coated handle
- Black painted finish on pin
- Includes zinc plated clip
- 1-3/4" and 2" – Grade 8 alloy steel



Hitch Pin Rack Displays
See page 13 for assortment info

PART NO.	BULK MULTIPLE	DIA.	USABLE LENGTH	WGT. EA.
B504050		1/2	3-5/8	0.6
B504051		5/8	4	0.8
B504052		5/8	5-1/2	1.2
B504052B	20			
B504053		3/4	4	1.1
B504053B	20			
B504054		3/4	6-1/2	1.6
B504054B	25			
B504055		7/8	6-1/2	1.9
B504055B	10			
B504056		1	7-1/2	2.7
B504056B	10			
B504057		1-1/8	8-1/2	3.8
B504057B	5			
B504058		1-1/4	8-1/2	4.7
B504059		1-1/2	8-1/2	5.5
B96501		1-3/4	8-1/2	7.0
B96502		2	8-1/2	8.5



Items in RED are available in low bulk pricing

COLD FORGED HITCH PINS

- One-piece forged pin
- High carbon steel
- Spring wire handle
- Includes clip or linch pin and chain
- Zinc plated

PART NO. W/CLIP	PART NO. W/CHAIN	DIA.	USABLE LENGTH	WGT. EA.
B500172		1/2	3-1/2	0.4
B500173		5/8	4-1/4	0.6
B500174	B504919	5/8	6-1/4	0.8
B500175	B504920	3/4	4-1/4	0.9
B500176	B504921	3/4	6-1/4	1.1
B500177	B504922	7/8	6-1/4	1.5
B500178	B504923	1	6-1/4	1.9
B500179	B504924	1-1/8	6-1/4	2.4
B500180	B504925	1-1/4	6-1/4	2.9



BENT HITCH PINS

- Fits lawn tractors and snow plows
- High carbon steel pin
- Zinc plated
- Includes zinc plated clip

PART NO.	DIA.	USABLE LENGTH	WGT. EA.
B504914	1/2	3	0.3
B504915	5/8	3	0.5
B504916	3/4	3-1/2	0.8



- Our lowest priced pin
- Medium carbon steel pin
- Zinc plated
- 3/4" and 1" can be used as top link pins with extra large head for worn holes

PART NO.	DIA.	USABLE LENGTH	WGT. EA.
B505138	3/4	5-1/2	.80
B505139	7/8	5-1/2	1.1
B505140	1	5-3/4	1.5
B505141	1-1/8	5-3/4	1.9



FARM STRAIGHT CLEAVISES

- Black powder coated finish
- Zinc plated pin and clip
- Forged for better consistency in strength, quality, and conformity

PART NO.	PIN DIA.	BODY SIZE	MAX. WLL (LBS.)	WGT. EA.	SIMILAR TO MIDLAND
B96440	1/2	5/8 x 3-1/4	6,000	1.4	M8158
B96439	5/8	3/4 x 3-3/4	12,000	2.3	M8134
B96441	3/4	7/8 x 3-1/4	16,000	3.0	M8878
B96442	3/4	7/8 x 4-1/4	16,000	3.6	M8178
B96443	7/8	15/16 x 4-5/8	20,000	4.2	M8190
B96444	1	1 x 5-5/16	25,000	6.0	M8195



FARM TWISTED CLEAVISES

- Black powder coated finish
- Zinc plated pin and clip
- Forged for better consistency in strength, quality, and conformity

PART NO.	PIN DIA.	BODY SIZE	MAX. WLL (LBS.)	WGT. EA.	SIMILAR TO MIDLAND
B96446	1/2	5/8 x 3	6,000	1.4	M8258
B96445	5/8	3/4 x 3-1/2	12,000	2.3	M8234
B96447	3/4	7/8 x 3	16,000	3.0	M8078
B96448	3/4	7/8 x 3-7/8	16,000	3.6	M8278
B96449	7/8	15/16 x 4-1/4	20,000	4.2	M8290
B96450	1	1 x 5	25,000	6.0	M8295



FARM SCREW PIN CLEAVISES

- Black powder coated finish
- Zinc plated pin and clip
- Forged for better consistency in strength, quality, and conformity

PART NO.	BODY SIZE	MAX. WLL (LBS.)	WGT. EA.	SIMILAR TO MIDLAND
B96461	1/4 x 1-1/8	1,000	0.12	M1646
B96462	5/16 x 1-1/4	2,000	0.2	M1647
B96463	3/8 x 1-7/16	3,000	0.3	M1648
B96497	7/16 x 1-11/16	4,000	0.5	M1649
B96464	1/2 x 1-15/16	6,500	0.75	M1650
B96465	5/8 x 2-1/2	9,000	1.3	M1651
B96466	3/4 x 3	13,000	2.2	M1652
B96467	7/8 x 3-1/4	15,000	3.5	M1653
B96468	1 x 3-3/4	17,000	5.0	M1654



FARM UTILITY CLEAVISES

- Black powder coated finish
- Zinc plated pin and clip
- Forged for better consistency in strength, quality, and conformity

PART NO.	BODY SIZE	MAX. WLL (LBS.)	WGT. EA.	SIMILAR TO MIDLAND
B96452	1/4 x 7/8	1,000	0.1	M1546
B96453	5/16 x 1	1,500	0.2	M1547
B96454	3/8 x 1-1/4	2,000	0.3	M1548
B96455	7/16 x 1-1/2	3,000	0.4	M1549
B96456	1/2 x 1-11/16	6,000	0.6	M1550
B96457	5/8 x 2	9,000	1.2	M1551



- Black powder coated finish
- Zinc plated pin and clip
- Forged for better consistency in strength, quality, and conformity

PART NO.	BODY SIZE	MAX. WLL (LBS.)	WGT. EA.	SIMILAR TO MIDLAND
B96451	3/4 x 6-3/16	10,000	3.3	M465



ONE-PIECE DRAWBARS

- One-piece 3-point hitch cross drawbars to fit category 0 through 3 tractors
- Black powder coated finish

Items in RED are available in low bulk pricing

PART NO.	BULK MULTIPLE	CAT.	LIFT ARM SPACING	NO. OF HOLES	HOLE DIA.	PIN DIA.	THICKNESS	WIDTH	WGT. EA.
B500235		1	20"	7	3/4	7/8	1	2-1/2	13.5
B500236		1	26"	11	3/4	7/8	1	2-1/2	16.5
B500236B	6								
B500237		2	26"	11	3/4	1-1/8	1-1/4	3	27.0
B500237B	4								
B500238		2	32"	13	3/4	1-1/8	1-1/4	3	33.0
B500238B	4								
B94577		3	38"	5	1-1/2	1-1/2	1-3/4	3-1/2	61.0



TRACTOR DRAWBAR HOOK

- No. B96469
- Hot forged, high carbon steel
- HEAT TREATED
- Includes 3/4" T-handle pin
- Similar to Midland M834
- Black powder coated finish

Fits all tractor drawbars with 3/4" holes, up to and including 1-1/4" thick. Use with chain sizes 5/16" to 1/2", including high-test chain.



FARM DOUBLE CLEVISES

- One piece, forged steel
- HEAT TREATED
- Use with high test chain

PART NO.	CHAIN SIZE	MAX. WLL (LBS.)	WGT. EA.	SIMILAR TO MIDLAND
B96458	1/4 or 5/16	4,700	0.4	M605
B96459	3/8	6,600	0.5	M606
B96460	7/16 or 1/2	11,300	1	M608



STABILIZER ARMS & PINS

PART NO.	CAT.	TYPE	SIZE	HOLES	CENTERS	WGT.
B504936	1	Flat Bar	3/8 x 1-3/4	7/8	31-1/8 & 34-3/4	7.0
B504062	1	Adjustable	7/8 Thread	7/8	27-1/2...35	6.5

PART NO.	PIN DIA.	THR DIA.	USABLE	OVER ALL	REPLACES	WGT. WGT.
B504064	7/8	5/8	1/2	2-7/8	Same, but longer usable	0.3



- Includes 2 pins & handle
- Replaces hydraulic cylinders or old screw jacks in those applications where infrequent adjustment is needed
- Black powder coated finish

PART NO.	BULK MULTIPLE	DESCRIPTION	THREAD DIA.	PIN DIA.	HOLE CENTER ADJUSTMENT	WGT. EA.
B504067		Ratchet Jack	1-1/4	1	20...28	14.0
B504067B	5					

PART NO.	DESCRIPTION	PIN DIA.	USABLE	OVER ALL	WGT. EA.
B504952	Pin w/2 Clips	1	2-3/4	3-1/2	0.7



Items in RED are available in low bulk pricing

FORGED TOP LINKS

- Quality forged top links - All links are yellow zinc dichromate plated

PART NO.	BULK MULTIPLE	CAT.	TYPE	PIN HOLES	THREAD DIA.	BODY	ADJUSTMENT (HOLE CENTERS)	WGT. EA.
B500219		0	Std.	5/8	3/4	7-1/2	10-3/4...16-3/8	2.9
B504926		1	Std.	3/4	1-1/8	13	17-1/2...26	7.7
B500220		1	Std.	3/4	1-1/8	16	20-1/2...29	7.6
B500220B	6							
B504927		1	Std.	3/4	1-1/8	20	24-1/2...33	9.1
B500221		1 & 2	Std.	3/4 & 1	1-1/8	16	20-3/4...31	9.4
B505450		1 & 2	Std.	3/4 & 1	1-1/8	20	24-3/4...35	10.1
B500222		2	Std.	1	1-1/8	16	21...33	9.8
B500222B	4							
B504928		2	Std.	1	1-1/8	20	25...37	11.1
B500463		2	H.D.	1	1-1/4	15	20-1/2...31-1/2	14.9
B500223		3	H.D.	1-1/4	1-3/8	19	25-1/2...36-1/2	23.0

Items in RED are available in low bulk pricing



SUPERLINKS/O.E.M. LINKS

- O.E.M. Specification top links twice as strong as standard aftermarket top links
- Links for all makes
- Black powder coated tube

PART NO.	CAT.	PIN HOLES	THREAD DIA.	BODY	ADJUSTMENT (HOLE CENTERS)	WGT. EA.
B94578	2	1"	1-1/4"	15"	20-9/32...30-3/4	13.00
B94579	3	1-1/4"	1-3/8"	19"	25-13/16...35-3/16	25.00

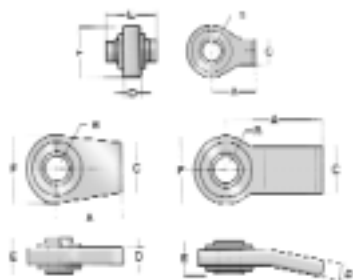


FORGED TOP LINK REPLACEMENT ENDS

PART NO.	THREAD	CAT.	PIN HOLE	THREAD DIA.	WGT. EA.
B500224	LH	1	3/4	1-1/8	2.4
B500225	RH	1	3/4	1-1/8	2.4
B500226	LH	2	1	1-1/8	3.0
B500227	RH	2	1	1-1/8	3.0



FORGED WELD ON BALL SOCKETS



PART NO.	TYPE	CAT.	A	B	C	D	E	F	WGT. EA.
B500230	Top Link	1	2	3/4	1-1/8	1/2	1-3/4	2-1/4	0.9
B500231	TopLink	2	2-3/8	1	1-1/8	1/2	2	2-5/8	1.4
B500232	Lift Arm-Straight	1	2-3/4	7/8	2-3/8	5/8	1-3/8	2-5/8	1.7
B500233	Lift Arm-Straight	2	3-1/8	1-1/8	2-3/4	3/4	1-3/4	3-1/8	2.8
B500234	LiftArm-Straight	3	3-3/8	1-7/16	3	3/4	1-3/4	3-1/2	3.0
B94575	Lift Arm-Bent	1	4	7/8	1-7/8	5/8	1-3/8	2-5/8	2.0
B94576	Lift Arm-Bent	2	4	1-1/8	1-7/8	5/8	1-3/4	3-1/8	2.7



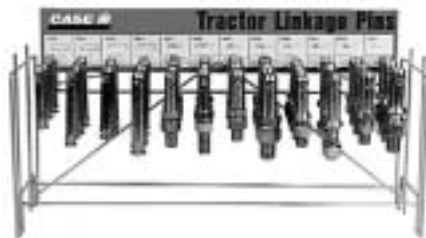
LIFT ARM PINS

- High carbon steel pin
- Zinc plated



Items in RED are available
in low bulk pricing

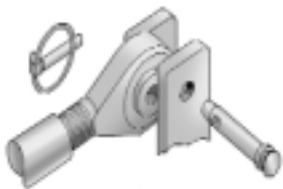
PART NO.	BULK MULTIPLE	CAT.	TYPE	USABLE	PIN DIA.	THRD DIA.	OVERALL	WGT. EA.
B500195		0	Adjustable	Adj.	5/8	5/8	4	0.4
B500196		1	Adjustable	Adj.	7/8	7/8	5-5/16	1.1
B500196B	20							
B500197		1	Forged	1-3/4	7/8	7/8	5-1/2	1.1
B500197B	20							
B500198		1	Adjust.-XL	Adj.	7/8	7/8	6-1/4	1.3
B500199		1	Forged-XL	2-1/4	7/8	7/8	6-1/2	1.3
B500199B	20							
B96500		1 to 2	Adjustable	Adj.	1-1/8	7/8	5-3/16	1.4
B500200		1 to 2	Forged	1-3/4	1-1/8	7/8	5-1/4	1.5
B500201		1 to 2	Forged-XL	2-1/4	1-1/8	7/8	6-5/16	1.6
B505142		2 to 1	Forged	1-3/4	7/8	1-1/8	5-3/4	1.8
B504060		2	Adjustable	Adj.	1-1/8	1-1/8	6-1/4	2.3
B500202		2	Forged	1-3/4	1-1/8	1-1/8	6-1/4	2.3
B500202B	10							
B500203		2 to 3	Forged	1-7/8	1-7/16	1-1/8	5-7/8	3.0
B504061		3	Forged	2	1-7/16	1-3/8	5-7/8	3.5
B505148		2	Clevis	4-7/16	1-1/8	--	6-1/2	1.8
B505149		2	Clevis	7-5/8	1-1/8	--	9-1/4	2.9
B505150		3	Clevis	4-11/16	1-7/16	--	6-1/2	2.9
B505151		2 & 3	Clevis	4 & 4-1/2	1-1/8 & 1-7/16	--	9-1/4	3.4



Linkage Pin Rack Display
See page 13 for assortment info

TOP LINK PINS

- High carbon steel pin
- Zinc plated



Items in RED are available
in low bulk pricing

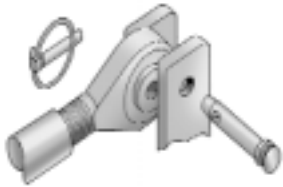
PART NO.	BULK MULTIPLE	CAT.	REPLACES	DIA.	USABLE	OVERALL	WGT.
B500181		1	528081R1	3/4	3	5-1/4	1.1
B500182		1	528084R1	1	4-1/4	6-1/8	1.4
B500183		0	--	5/8	2-3/4	4-7/16	0.4
B500184		1	Ford 9N560	3/4	2-3/4	4-1/2	0.5
B500184B	20		MF 1956471M1				
B500185		1	MF 195589M1	3/4	3-7/8	5-1/2	0.6
B500185B	20		AC 339942				
B500186		1	Ford E381T9	3/4	4/3/4	6-3/8	0.8
B500187		2	Ford C5NN560A	1	3-9/16	5-1/4	1.2
			MF 1858731\1191				
B500188		2	Ford C5NN486A	1	4-5/16	6	1.3
B500188B	20						
B500189		3	--	1-1/4	4-7/16	6-1/2	2.1



LINCH PINS

- Carbon steel forged pins
- Spring steel snap rings
- Zinc plated
- No. B500171 black powder coated finish

BULK NO.	BULK MULTIPLE	PIN DIA.	TYPE	CAT.	PACKAGE	PCS/BAG
B500168		3/16	Std.	0	B500413	2
B504901		5/16	Std.	1 & 2		
B500169		1/4	Std.	1 & 2	B500412	2
B500169B	500					
B500170		7/16	Std.	1 & 2		
B500170B	500					
B504902		7/16	w/Chain	1 & 2		
B505146		7/16	Long	1,2,3		
B500171		7/16	Black HD	1,2,3		
B500171B	500					



Items in RED are available in low bulk pricing



Linch Pin Displays

See page 12 for assortment info

TOP LINK & LIFT ARM BUSHINGS

- Zinc plated

PART NO.	TYPE	CAT.	I.D.	O.D.	OVER-ALL	WGT. EA.
B500190	Top Link	1 to 2	3/4	1	2	.18
B500191	Top Link	2 to 3	1	1-1/4	2	.24
B500192	Lift Arm	1 to 2	7/8	1-1/8	1-3/4	.19
B500193	Lift Arm	2 to 3	1-1/8	1-7/16	1-3/4	.28
B500194	Lift Arm w/hole	2 to 3	1-1/8	1-7/16	2-1/2	.44



Bushing Displays

See page 12 for assortment info

- Spring steel wire
- Zinc plated

BULK NO.	WIRE DIA.	OVER-ALL	FITS PIN DIA.	PACKAGE	PCS/BAG
B504903	5/64	1-3/4	5/16 to 1/2		
B504904	3/32	1-3/4	3/8 to 5/8	B500406	12
B504905	1/8	2-1/16	1/2 to 7/8	B500407	8
B504906	5/32	3	5/8 to 1	B500408	7
B504907	3/16	4-3/16	3/4 to 1-1/4	B500409	3
B504908	1/4	4-1/4	7/8 to 1-1/2	B500410	2
B504909	5/16	3-7/8	3/4 to 1-1/4	B500411	2



PTO ADAPTERS

- Used to increase or reduce the diameter, or extend the length of the tractor's power take-off shaft to fit an implement's PTO shaft.
- Black oxide finish or zinc plated
- Newer, HEAVY DUTY, 20-spline models have been redesigned to be stronger, smaller and lighter to reduce rotating mass at higher RPM's.

PART NO.	DESCRIPTION	MAX. H.P.	FEMALE SPLINE	MALE SPLINE	EXTENDS PTO	OVER-ALL	SIMILAR TO HUB CITY NO.	WGT. EA.
B500204	Forged Increaser	70	1-1/8 x 6	1-3/8 x 6	1-1/8	3	03-32-00018	1.4
B500205	Sleeve Increaser	70	1-1/8 x 6	1-3/8 x 6	0	1-7/8	03-32-00363	0.2
B500206	Forged Increaser	70	1-1/8 x 6	1-3/8 x 6	2-1/2	4-5/8	03-32-03531	1.3
B500207	Forged Reducer	70	1-3/8 x 6	1-1/8 x 6	2-3/4	5-3/8	03-32-00400	1.4
B500208	Forged Extender	70	1-3/8 x 6	1-3/8 x 6	3	5-3/8	03-32-00378	2.0
B500210	21 to 6 Spline QR 1000 to 540 RPM	70	1-3/8 x 21	1-3/8 x 6	4-1/8	6-3/8	03-32-01375	3.2
B500212	QR Extender	70	1-3/8 x 6	1-3/8 x 6	4-1/8	6-3/8	03-32-00010	2.8
B500213	6 to 21 Spline QR 540 TO 1000 RPM	70	1-3/8 x 6	1-3/8 x 21	4-1/8	5-7/8	03-32-00013	3.2
B500214	20 to 6 Spline	100	1-3/4 x 20	1-3/8 x 6	4-5/8	7-1/2	03-32-00020	6.1
B500461	20 to 6 Spline HEAVY DUTY	150	1-3/4 x 20	1-3/8 x 6	5	7-7/8	03-32-00076	6.6
B500215	20 to 21 Spline	100	1-3/4 x 20	1-3/8 x 21	4-5/8	7	03-32-00021	6.1
B500462	20 to 21 Spline HEAVY DUTY	150	1-3/4 x 20	1-3/8 x 21	5-1/2	7-7/8	03-32-00077	6.7
B500216	Over-running Clutch Extender	*Note	1-3/8 x 6	1-3/8 x 6	3-3/4	6-3/4	03-31-00660	5.0
B500217	Over-running Clutch Increaser	*Note	1-1/8 x 6	1-3/8 x 6	3-3/4	6-3/4	03-31-00670	5.0

**Our over-running clutches provide a safe means to protect operators and expensive machinery from situations when the inertia of a PTO driven implement exceeds and over-runs the tractor PTO speed. In such a case, the over-running coupler will free-wheel smoothly and safely. Over-running clutches will normally withstand applications requiring up to 65 h.p. at 540 rpm and 100 h.p. at 1000 rpm. Extreme shock loads or drive line angularity will reduce this capability.*



B500210



B500462



B500216

PTO ACCESSORIES

- Zinc plated

Items in RED are available in low bulk pricing

PART NO.	BULK MULTIPLE	DESCRIPTION	TYPE	PIN DIA.	USABLE	WGT. EA.
B505143		Lock Pin	Round	1/4	2-1/4	0.2
B505143B	50					
B500218		Lock Pin	Round	5/16	2-1/4	0.2
B500218B	50					
B504066		Lock Pin	Square	5/16	2-1/4	0.2
B505144		Lock Pin	Round	3/8	2-1/4	0.2
B505145		Lock Pin	Square	3/8	2-1/4	0.2



PTO Lock Pin Displays

See page 12 for assortment info

TRAILER HITCH BALLS

- Meets SAE J684F specs
- All SAE Classes I, II, III, IV
- One piece, solid steel
- Chrome finish

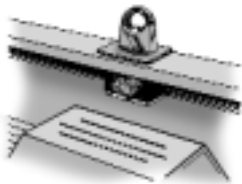
BULK NO.	VESC CLASS	MAX. LOAD	BALL SIZE	THREAD DIA.	STUD LENGTH	WGT. EA.
B500243	I	2000	1-7/8	3/4	1-3/4	1.6
B500244	II	3500	2	3/4	1-3/4	2.4
B500245	III	5000	2	1	2-1/8	2.9
B500246	IV	7500	2-5/16	1-1/4	2-1/8	4.0



ANCHOR POINTS - FOR PICK UP TRUCKS

- Installs in stake pocket
- Turn eye to expand rubber block

BULK NO.	TYPE	FINISH
B500249	Eyebolt	Zinc Plated
B500248	Decorative	Chrome Plated



QUICK HITCH ADAPTOR BUSHINGS

- Fits most category 3 quick hitches
- Converts category 2 lift pins to category 3
- Use 7/16 x 1-3/8 roll pin to secure
- Package includes 2 adaptors and 2 roll pins
- Zinc plated

BULK	CAT.	I.D.	O.D.	WGT.
B504063	2 to 3	1-1/8	1-7/16	1.1



STROKE CONTROLS



B96498
B96499

PART NO.	FITS SHAFT SIZES	SEGMENT
B505456	1-3/8 & 1-1/2	3/4, 1, 1-1/4, 1-1/2
B505478	1-1/8 & 1-1/4	3/4, 1, 1-1/4, 1-1/2
B96498	1-1/8, 1-1/4, 1-3/8, 1-1/2	3/4, 1, 1-1/4, 1-1/2
B96499	1-3/4, 1-7/8, 2	1, 1-1/2, 2, 4



B505456
B505478

BEAD-CHEATA

- **No. B96160**
A revolutionary new hand tool that makes the dismounting and mounting of tires quick and easy.
- Applies up to 10 tons of pressure on the bead
- Portable and small enough to fit into a tool box
- Simple to operate and comes fully assembled
- **Construction uses:**
Backhoes, loaders and graders
Skid steer - bobcats
Lull loaders
Compactors such as Dyna - Pacs
Rough terrain fork lifts
Low bed & Tag-A-Long Trailers
Trucks (tube type and tubeless)
- **Farm uses:**
Tractor tires (front and rear),
Implements, including:
Manure spreaders
Wagons Grain carts
- **Anywhere at all:**
All terrain vehicles
Golf carts
Pickups and passenger cars
Four wheel drive vehicles
16.9 x 30 logger
(on some model wheels)
Fork lifts & industrial mine tires
Wheelbarrows and more
- Patented



COUNTER TOP ASSORTMENTS

LINCH PINS

No. B500459

Most Popular 7/16"

Category 1 & 2

Contains 200 pcs. of the most popular size -
7/16" lynch pin, our B500170.



LINCH PINS

No. B94581

Assorted Sizes

Category 0, 1, 2 and 3

Contains 130 pcs. in 7 sizes:

B500168 x 20, B500170 x 30,
B504902 x 10, B500169 x 30,
B500171 x 15, B505146 x 10,
B504901 x 15

LINCH PINS

No. B504152

Black Ring

Category 1, 2 and 3

Contains 100 pcs. of our Heavy-Duty,
black ring 7/16" lynch pin, our B500171



PTO LOCK PIN DISPLAY

No. B94583

Contains:

B505143 x 8 (PTO Lock Pin 1/4"RD)
B505144 x 8 (PTO Lock Pin 3/8" RD)
B500218 x 28 (PTO Lock Pin 5/16" RD)
B505145 x 8 (PTO Lock Pin 3/8" Square)
B504066 x 8 (PTO Lock Pin 5/16" Square)

HAIR PIN CLIPS

No. B500460

Shop Assortment

A heavy duty, plastic snap-top case keeps
6 popular sizes organized. Handy size and
description call-outs inside the lid show clips
actual size for easy reference.

Contains 103 clips in 6 sizes:

B504903 x 20, B504904 x 30,
B504905 x 20, B504906 x 20,
B504907 x 8, B504909 x 5



BUSHING ASSORTMENTS No. B94582

Contains 54 bushings in 5 sizes:

B500190 x 10, B500191 x 6,
B500192 x 28, B500193 x 6,
B500194 x 4

Emphasis on category 1 to 2

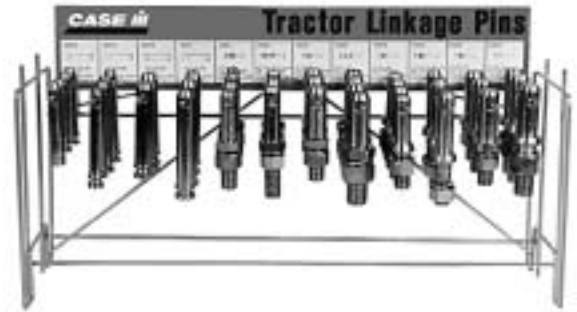
Header with product & size info

Wgt. 12 lbs.

LINKAGE PIN RACK DISPLAY

- No. B500458
- Most popular sizes
- Includes wire rack
- Mounts on pegboard, shelf or counter
- Stacks on other rack displays
- Header with product and size info
- Shipping weight 60 lbs

Contains 41 pins in 10 sizes:
 4 x B500184, 4 x B500185,
 3 x B500187, 3 x B500188,
 4 x B500196, 8 x B500197,
 3 x B500198, 3 x B500199,
 3 x B500200, 6 x B500202



RACK DISPLAY ASSORTMENTS

- Contains best selling sizes
- Includes sturdy wire rack
- Mounts on pegboard, shelf or counter
- Stacks on other rack displays
- Includes header with product and size info

RED HEAD No. B504153

Contains 29 pins in 5 sizes:
 6 x B504052, 8 x B504053, 8 x B504054,
 4 x B504055, 3 x B504056
 Wgt. 45 lbs.



COLD FORGED No. B500457

Contains 24 pins in 5 sizes:
 6 x B500174, 6 x B500176, 6 x B500175,
 3 x B500177, 3 x B500178
 Wgt. 27 lbs.

MISCELLANEOUS

PART NO.	DESCRIPTION	INCLUDES	FITS/REPLACES	WGT.
B504926	Drill Drag Chain		Std. Seed Drills	1.6
B504949	Cotter Pin Assortment	100 Pcs. of popular sizes		1.7



BULK PRODUCTS



B504054



B500220



Red Head Hitch Pin



Clevises



Top Links



PTO Adapters



Counter Top Assortment



Rack Display